



MAXTITE

How to Template a Countertop with the Plastic Templating System

Tip: Template adhesive is not sticky or tacky, and you don't need to use much! Just apply (don't touch the applicator tip to plastic) and press strips together for 5 seconds. Short applicator tips are more precise; use long applicator tip for increased flow. Write notes directly on the template with permanent marker!

Templating basics



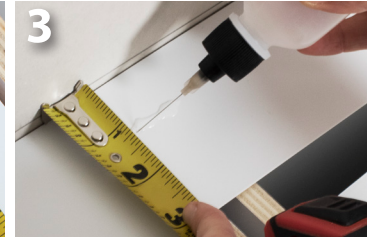
1
Cut back wall strip to length and lay it in place



2
Tip: Use finish nails or glue to hold strips in place while you are templating



3
Cut a strip in quarters in order to make 24" side supports



4
Apply adhesive to the back wall strip, starting about 1" away from the wall, for side supports



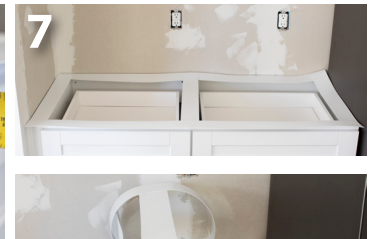
5
Place the side support strips. Place one support strip every 18". Offset about 1" forward so they are not touching the back wall



6
Apply adhesive to the front end of the side support strips in preparation for the front edge strip



7
Cut the front edge strip to length, and align it with the inside edge of the front cabinet. It will extend beyond the cabinet to create 1.5" overhang



8
You can now remove the template and roll it up for transport or shipping

Templating Angles



Start by building the template as described above. Simply overlap & glue the front and back strips at the angle. For non-90° angles, extend both front and back strips beyond the cabinets to overlap at the angle. Add a support for the V-shape.



Templating a Bar

The process is the same with or without corbels



1
Cut & glue a bar-length template strip to extend beyond the ends of the bar. To wrap a corner, make angled cuts



2
Cut & attach side support strips. Mark the inside and outside edge of the bar. Attach 2-3 supports per 6' of length



3
Attach the inside-edge strip to side supports where you marked



4
Lay template flat and attach outside edge strip to side supports